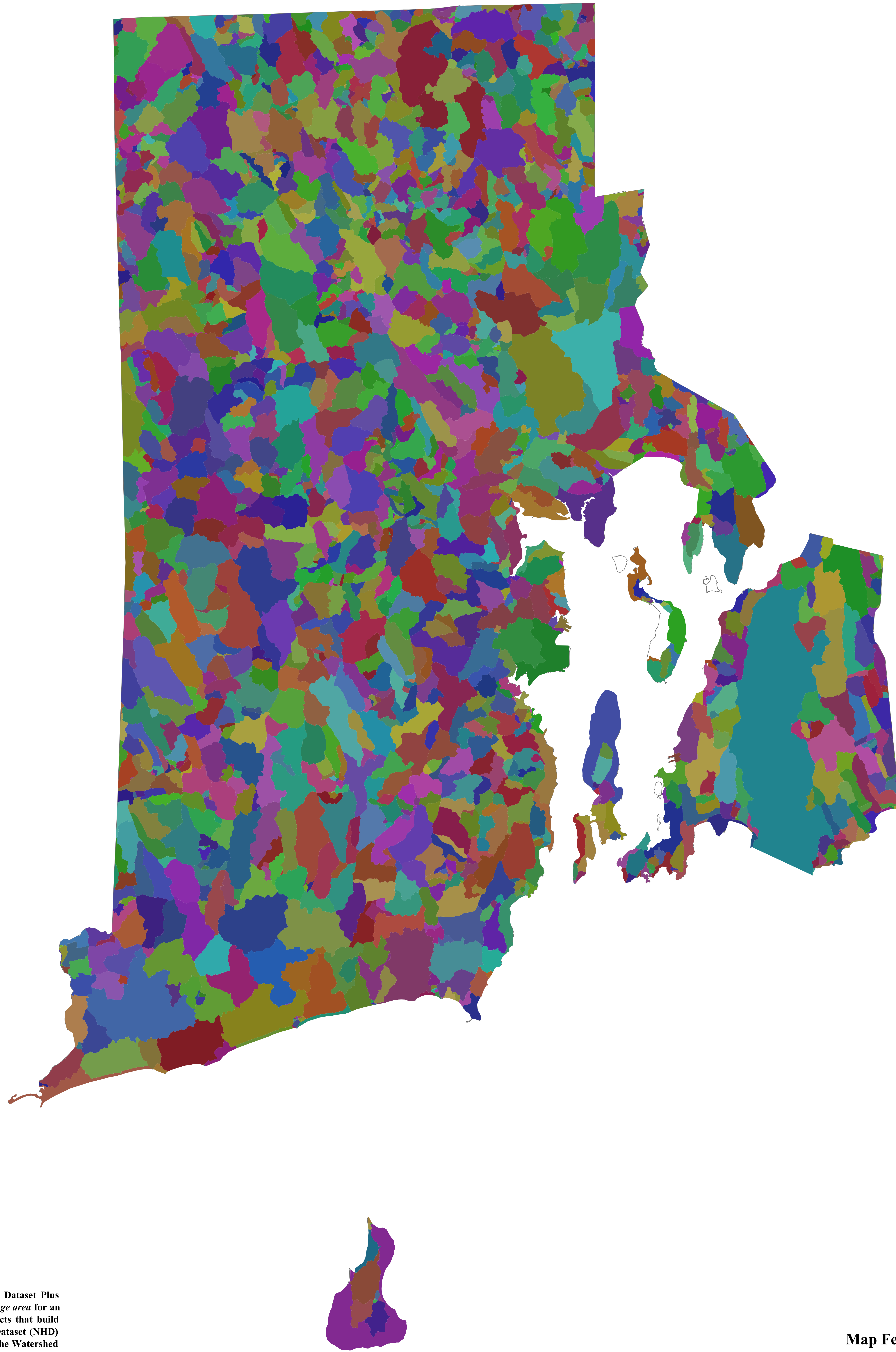


ELEVATION-DERIVED CATCHMENTS FROM THE NATIONAL HYDROGRAPHY DATASET PLUS (NHD*Plus*)



NHD*Plus* Overview

This map displays catchments from the National Hydrography Dataset Plus (NHD*Plus*) Version 2. An NHD*Plus* catchment is the *local drainage area* for an NHD stream segment. NHD*Plus* is a suite of geospatial products that build upon and extend the capabilities of the National Hydrography Dataset (NHD) by integrating it with the National Elevation Dataset (NED) and the Watershed Boundary Dataset (WBD) hydrologic units. NHD*Plus* includes improved stream names and up/downstream navigation, value-added attributes (such as stream order) that enable advanced query, analysis and display of the underlying stream network, elevation-derived catchments that integrate the land surface with the network, catchment attributes (such as temperature, precipitation, land cover) that support landscape characterization, stream flow volume and velocity estimates for pollutant dilution modeling, and associated flow direction and accumulation grids. These capabilities enable a diverse collection of water-related applications implemented by a large and growing user community. NHD*Plus* is the result of another joint U.S. Environmental Protection Agency (EPA) and U.S. Geological Survey (USGS) effort.

Additional information on NHD*Plus*, including data, documentation, tutorials, tools and technical support can be obtained from the EPA WATERS Web site at <http://www.epa.gov/waters>.

Map Features

-  NHD*Plus* Catchment
-  State Boundaries

