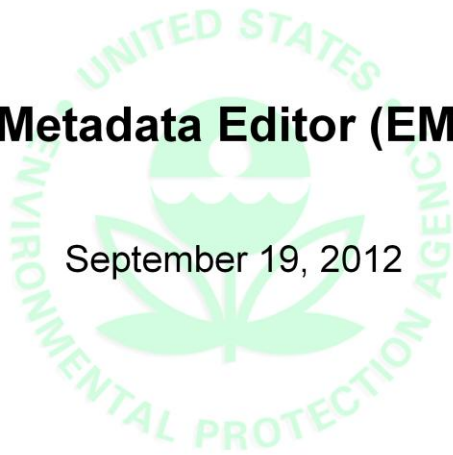




EPA Metadata Editor (EME) 3.2

September 19, 2012



1/29/2013

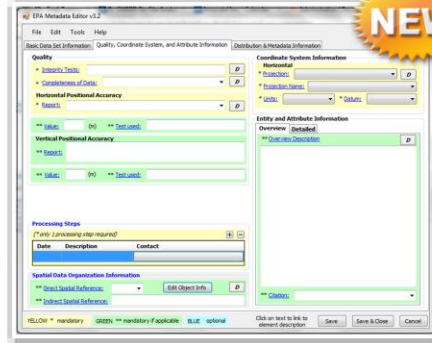
U.S. Environmental Protection Agency

1



Today's Agenda

- General Overview of EME 3.2
 - Development Goals
 - EME 3.2 Enhancement List
- Feature Review
- Feature Demonstration
- Questions and Answers
- EME 3.2 Rollout Schedule
- ArcGIS 10 Metadata Big Picture
- Getting Help



1/29/2013

U.S. Environmental Protection Agency

2



General Overview of EME 3.2

- EPA received numerous enhancement requests and ideas for EME 3.2
 - *Over 25 feature requests across EME synchronizer, validator, user interface, and toolbar*
- Prioritized requests and selected those with highest impact
 - *New fields and coordinate systems, bug fixes, minor usability improvements*
- Current release influenced by planning for future EME release
 - *Support ISO 19115/19139?*
 - *Perhaps align with stylesheet approach (if desired)?*





EME 3.2 Enhancement List

- Support for **Additional Metadata Fields**
 - Spatial Domain Information (FGDC Section 3)
 - Process Step Contact Information
 - Source Information - Under Data Quality->Lineage (John Bocchino)
- Support for New **Coordinate Systems**
 - Albers Conical Equal Area
 - Web Mercator Auxiliary Sphere
- **Additional Usability Enhancements**
 - Validator issue when EME validator hits a snag
 - Include EPA-Specific stylesheet from EME install
 - Issue a warning when user runs EME syncher
 - Address XML header output for feature class export
 - Address help updates
 - Compatibility testing with ArcGIS 10.1



1/29/2013

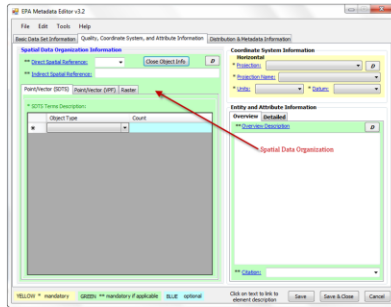
U.S. Environmental Protection Agency

4



EME 3.2 Feature Review

- **Support for Additional Metadata Fields**



Spatial Data Organization 3.

- 3.1 Indirect Spatial Reference
- 3.2 Direct Spatial Reference Method
- 3.3 Point and Vector Object Information
OR
- 3.4 Raster Object Information

1/29/2013

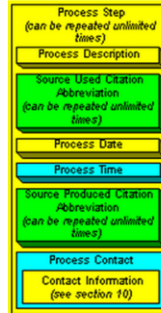
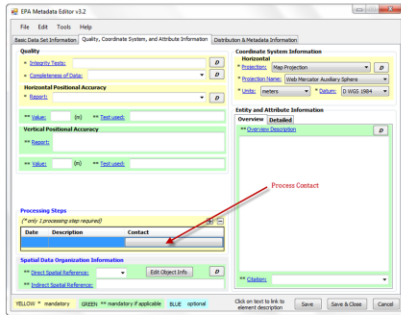
U.S. Environmental Protection Agency

5



EME 3.2 Feature Review

- **Support for Additional Metadata Fields**



1/29/2013

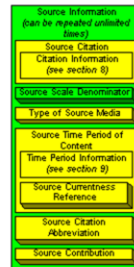
U.S. Environmental Protection Agency

6



EME 3.2 Feature Review

- **Support for Additional Metadata Fields**



1/29/2013

U.S. Environmental Protection Agency

7



Demonstration: EME Features

**Support for New
Fields**

1

**Support for New
Projections**

2

**Other Usability
Updates**

3

1/29/2013

U.S. Environmental Protection Agency

8



Questions and Answers

1/29/2013

U.S. Environmental Protection Agency

9



EME 3.2 Rollout Plans

- **September 2012:** Finalize Updates and Internal Testing
- **October 2012:** Perform User Testing and Resolve Issues
 - *You may hear from us during this time.....*
- **November 2012:** Release EME 3.2
- **Future:** Additional EME/Metadata Training and Special Interest Group Sessions





Quick Review ArcGIS 10: The Big Picture

- ESRI's ArcGIS 10 Workflow
 1. Select FGDC Metadata Style to view FGDC elements
 2. "Upgrade" to ArcGIS metadata format
 3. Edit metadata in ArcGIS
 4. Export ArcGIS metadata to FGDC (or other) format



1/29/2013

U.S. Environmental Protection Agency

11

http://help.arcgis.com/en/arcgisdesktop/10.0/help/index.html#/Creating_and_managing_FGDC_metadata/003t00000031000000/ [overview of how it's supposed to work]

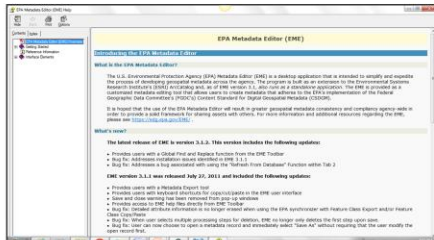


Common Errors with ArcGIS 10

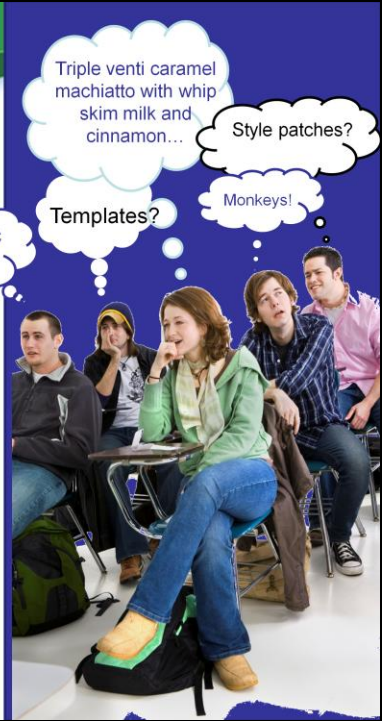
- Telltale signs that you're dealing with an upgraded metadata issue...
 - Some fields appear blank in EME
 - Edits made in EME do not show up in ArcCatalog

Getting Help


- EME Help
 - Extensive information available in EME Help
 - Help→Contents



Automatic updates



I mentioned EME help at the beginning of the presentation, but it's worth repeating that a lot of information is available to you in the Help documentation. We've sped through a lot of content today. All of what we've talked about is included in the Help documentation, which you can access from the EME interface.

A green apple is positioned to the left of a row of several books with various colored spines. The background features a green curved banner at the top.

Getting Help

- EME web resources
 - Fact sheets
 - Training presentations
 - Helpful links

<https://edg.epa.gov/EME/Resources.htm>

There are also some useful resources available on the EME website, including fact sheets, training presentations, and links to other metadata resources. Today's presentation will also be posted at this address.



Getting Help

- Contact Us:
– edg@epa.gov



We're standing by to answer
your questions.

If you'd like to get in touch, feel free to contact me, Catherine, or Jessica. You can reach all of us at once using the address on this slide. We always appreciate questions and feedback from EME users.



Thank you for your time today!

- Please fill out our training survey form so we can continue to improve our webinars
 - <https://epa.connectsolutions.com/quiz/>